



VINO
barzoniTM
Inspired touch

SPECIALTY · PATENTED · ADVANCED

PRESENTING THE BEST STANDARDS IN VINO (WINE), BAR AND CONTEMPORARY BEVERAGE FACILITIES THROUGH OUR FLAGSHIP STORE ON MG ROAD, NEW DELHI WITH A WALK-IN PRESENTATION OF OPTIONS, AND THE DESIGN CENTER FOR OUR SERVICES.

1999



Bars

2004



Draft Beer

2014



Wine

2024



Water

2004



Blending

1

Future focused smart engineered solutions.

2

Consumer need driven impactful facility creation.

3

Spares +10 years safety. Product life is till spares availability.

4

Best in design fit-out resource, for impeccable spaces.



Residential

Segments we Service



Commercial

Segments we Service



OUR VISION & MISSION



Inspired Touch

To improve spaces and their experience with Quality, Craftsmanship, and Modernity that is second to none in the world. It is reflected in every project we completed that turned into legends.



TRANSFORMATIONS

Expo Wine Showcase DLF Farms, Delhi



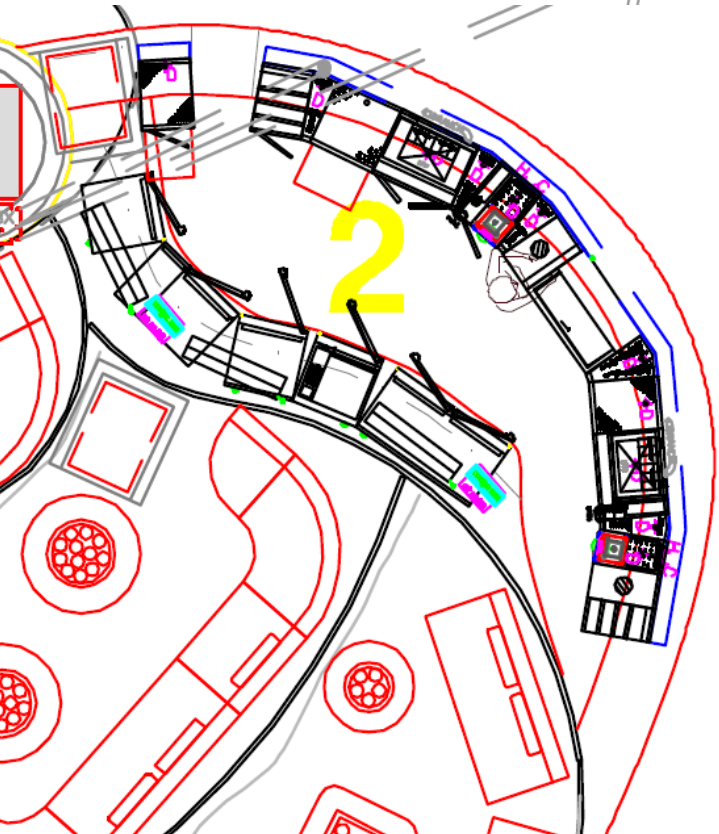
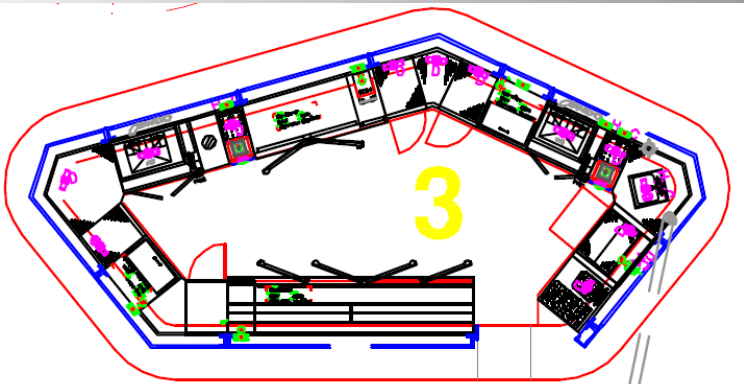
TRANSFORMATIONS



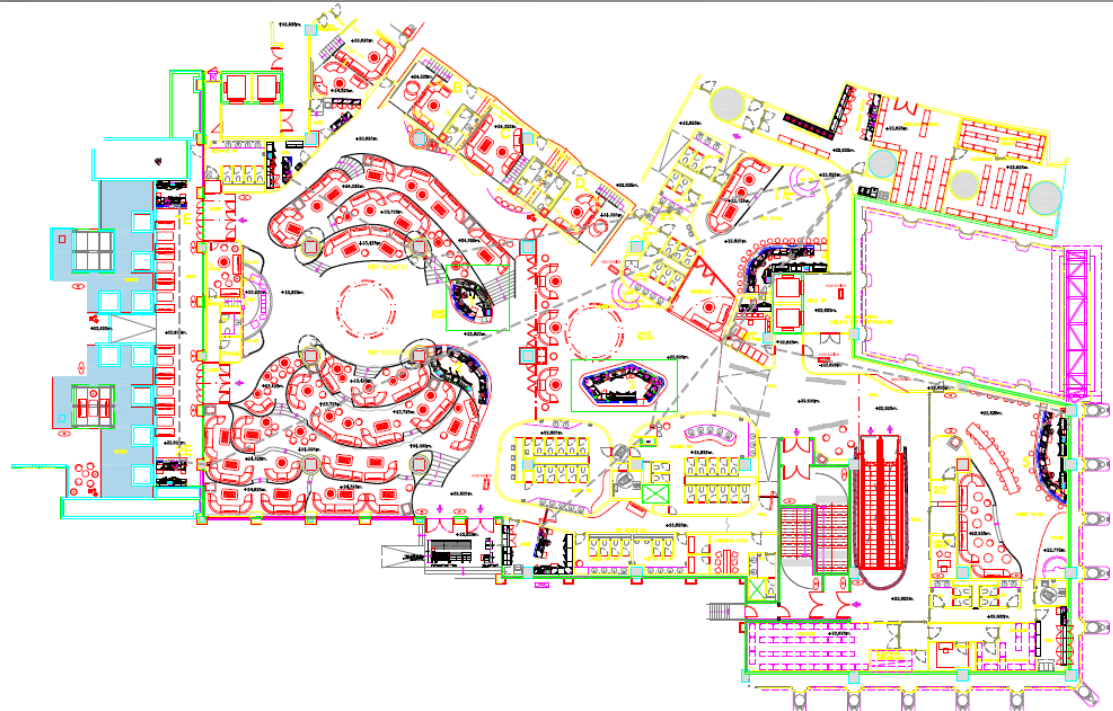
Pacha Nightclub
Studio City Macau



TRANSFORMATIONS



Pacha Nightclub Studio City Macau



SERVICE LEGENDS

	Power outlet, above counter		Drain Outlet, requires connection		Hot Water Outlet		Junction Box for tabling disconnects		Bar Die
	Power outlet, below counter		Floor trap, exit drain leads in		R/W Water Outlet		6\"/>		Millwork
	IP60 E/O Box		Drain connect, end, one side		Cold Water Outlet		4\"/>		Instructions
	E/O Built-in Wall		Drain connect, intermediate		Drain connect, end, all		6\"/>		
	E/O Bar Die						24\"/>		

Drains must run within 3" AFF. Power below counter are 12" AFF (Center-Outlet), above counter are 44" AFF (Center-Socket). Plumb connections are within 3" AFF at floor level and 4" from bar die. E/O Boxes = built in wall.

Project: Pacha Nightclub [MCE] 1503
 Customer: MCE Studio City Macau
 Contact: Mr. Garry Lawrence
 Open Date: 14/03/2015
 Sales Point: Hilknighly Barsmithe

Sheets: A1
 DB Number: DB1.1

Job #: 6379845
 Designers Initials: VME
 Terms: All rights are reserved. Copy reproduction and distribution without authors written consent is prohibited except ordering customer.

DESIGN BUILD
 Apt. Hrs: 48.0H
 Log: 15.00H
 1208-09 DLF Tower B, Jasje Dist. Center, New Delhi 110044. URL: BENNETA.COM | build@benнета.com Tel: 011 41500060

TRANSFORMATIONS



Sahib, All Day Dining Taj Vivanta Lucknow

PROJECT ALL DAY DINING

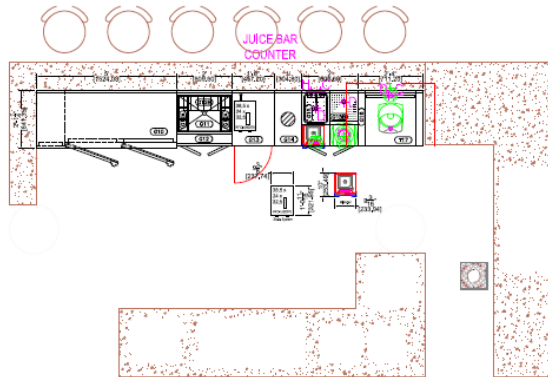
DESIGN TYPE BAR BEV. AND BUFFER

LOCATION LUCKNOW

REVISION DISCLAIMER

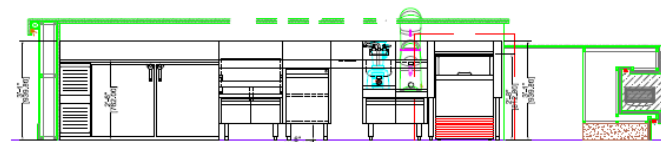
The reviewer must check into the master shared folder of this drawing to see if there is a latest revision on it. Link to shared drive is in the project section online at www.benneta.com/panorama/
Missing the revision may result in equipment not fitting into the bar space.

PROJECT DRIVE



EQUIPMENT SCHEDULE						
Item No.	Model Number	Qty	Equipment Category	Manufacturer	Equipment Remarks	Equip. Dimensions
010	UFO-11-30	1	Underbar Refrigerator	Gastbeke	300/500-30	
011	BA-24	1	Underbar Ice Chest	Gastbeke	A23-24	
012	SPB-24	1	Underbar Speed Rail	Gastbeke		
012A	MS3	2	Underbar Accessory	Gastbeke		
012B	COO	1	Underbar Accessory	Gastbeke		
013	FR3B-18	1	Underbar Filler & Drainboards	Gastbeke		
014	TRB-12	1	Underbar Dry Waste	Gastbeke	53001487	
015	BBB-12	1	Underbar Blender Station	Gastbeke	Under 870 Blender	
015B	BBB-12	1	Underbar Blender Station	Gastbeke	A23-24	
016	DSUTB-100	1	Hot Water Dispenser	Gastbeke		
017	J20-050A	1	Ice Maker, Undercounter w/fin	Marthocet Ice	3'-4" (by net)	

REFER TO PROJECT SPEC BOOK FOR PICTORIAL PRODUCT INFO.



ELEVATION B-B (BAR ELEVATION)

BENNETA BARSCOPE PVT LIMITED | 1220 DLF TOWER B, JASOLA DISTRICT CENTRE, NEW DELHI 110002 | 011 41650061 | BENNETA.COM



DESIGN NUM. D17.13182901.21

CUSTOMER

TAJ LUCKNOW HOTEL

DESIGN STATUS DRAFT

DATE 2017/03/07

DOC SIZE

A3

DESIGNER

VIKRAM MEDERATA

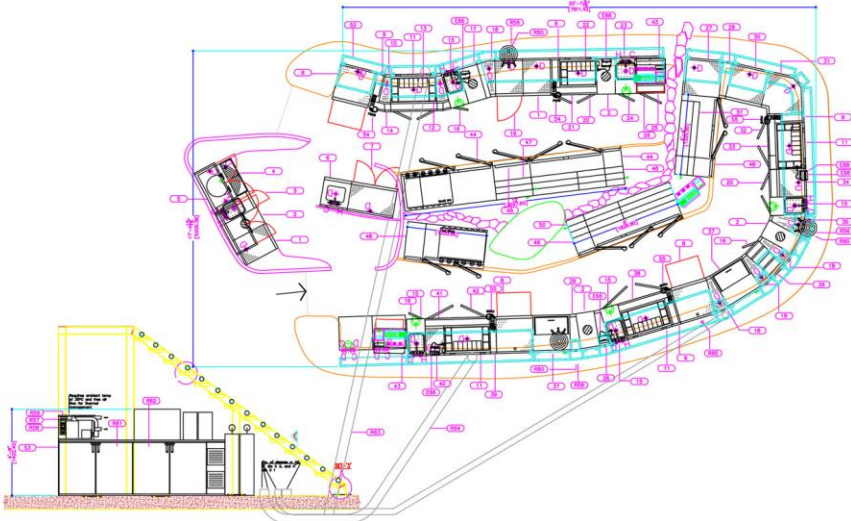
TRANSFORMATIONS

Kismet Nightclub The Park Hyderabad



SCHEDULE	
1	Bar Counter
2	Bar Sink
3	Bar Stool
4	Bar Tap
5	Bar Faucet
6	Bar Drain
7	Bar Cabinet
8	Bar Refrigerator
9	Bar Dishwasher
10	Bar Sink Drain
11	Bar Sink Faucet
12	Bar Sink Tap
13	Bar Sink Drainage
14	Bar Sink Drainage
15	Bar Sink Drainage
16	Bar Sink Drainage
17	Bar Sink Drainage
18	Bar Sink Drainage
19	Bar Sink Drainage
20	Bar Sink Drainage
21	Bar Sink Drainage
22	Bar Sink Drainage
23	Bar Sink Drainage
24	Bar Sink Drainage
25	Bar Sink Drainage
26	Bar Sink Drainage
27	Bar Sink Drainage
28	Bar Sink Drainage
29	Bar Sink Drainage
30	Bar Sink Drainage
31	Bar Sink Drainage
32	Bar Sink Drainage
33	Bar Sink Drainage
34	Bar Sink Drainage
35	Bar Sink Drainage
36	Bar Sink Drainage
37	Bar Sink Drainage
38	Bar Sink Drainage
39	Bar Sink Drainage
40	Bar Sink Drainage
41	Bar Sink Drainage
42	Bar Sink Drainage
43	Bar Sink Drainage
44	Bar Sink Drainage
45	Bar Sink Drainage
46	Bar Sink Drainage
47	Bar Sink Drainage
48	Bar Sink Drainage
49	Bar Sink Drainage
50	Bar Sink Drainage
51	Bar Sink Drainage
52	Bar Sink Drainage
53	Bar Sink Drainage
54	Bar Sink Drainage
55	Bar Sink Drainage
56	Bar Sink Drainage
57	Bar Sink Drainage
58	Bar Sink Drainage
59	Bar Sink Drainage
60	Bar Sink Drainage
61	Bar Sink Drainage
62	Bar Sink Drainage
63	Bar Sink Drainage
64	Bar Sink Drainage
65	Bar Sink Drainage
66	Bar Sink Drainage
67	Bar Sink Drainage
68	Bar Sink Drainage
69	Bar Sink Drainage
70	Bar Sink Drainage
71	Bar Sink Drainage
72	Bar Sink Drainage
73	Bar Sink Drainage
74	Bar Sink Drainage
75	Bar Sink Drainage
76	Bar Sink Drainage
77	Bar Sink Drainage
78	Bar Sink Drainage
79	Bar Sink Drainage
80	Bar Sink Drainage
81	Bar Sink Drainage
82	Bar Sink Drainage
83	Bar Sink Drainage
84	Bar Sink Drainage
85	Bar Sink Drainage
86	Bar Sink Drainage
87	Bar Sink Drainage
88	Bar Sink Drainage
89	Bar Sink Drainage
90	Bar Sink Drainage
91	Bar Sink Drainage
92	Bar Sink Drainage
93	Bar Sink Drainage
94	Bar Sink Drainage
95	Bar Sink Drainage
96	Bar Sink Drainage
97	Bar Sink Drainage
98	Bar Sink Drainage
99	Bar Sink Drainage
100	Bar Sink Drainage

SECTION ELEVATION
LOCATION



BAR STORAGE CAPACITY
Capacity information here.

SERVICE LEGENDS

- Power Supply, 220V, 15A (Check other specs on each individual equipment).
- Hot Water and Cold Water supply Provide regulated between 25 to 100 psi. Hot Water temperature: +49°C.
- Drain outlet tap/faucet, 1-1/2" standard. Connect to one main drain line running within 3" from back splash end, within 6" AFF.
- Drain floor trap. Connect main drain line here. Reqd. also for high volume drainage under glass washer.

SERVICES NOTICE
Modular Die style installation requires drainage line to be set inside bar die hollow within 6" AFF [After installation].
Hot and Cold water line; Power lines are provided from floor in bar die footprint.
Discuss with your project manager prior to laying of services.

COPYRIGHT
This drawing is the property of Benneta Barscope Pvt Limited. All rights are reserved and the design is issued on the condition that any information contained is not copied, reproduced, multiplied, or submitted to the inspection of any third parties, either wholly or in part without the written consent of Benneta Barscope Pvt Limited. The client has the responsibility to review the design in detail prior to ordering. On ordering it shall be understood that the customer has clearly gone through the drawing and has approved for fabrication.

BENNETTA
Barscope Pvt Limited
1513-1514 Wazir Nagar, BP Marg, New Delhi 110003
T: +91 11 41550060
F: +91 11 41550061
www.benneta.com

Project Title
NIGHTCLUB BAR
PARK HOTEL HYDERABAD, INDIA

Drawing Ref.
VIP161_B1.3

Scale
1:30 @ A1

Date
05/03/2010

Design by
VM

Drawing Title
SERVICE AND MECHANICAL DRAWING FOR NIGHTCLUB BAR

Hours
12.00

Design Consultant
BENNETTA

Revision Note
Glasswashing Change
Beer reserve relocation
POS location change
Dry cabinet on wall
Liquor system, Pour only

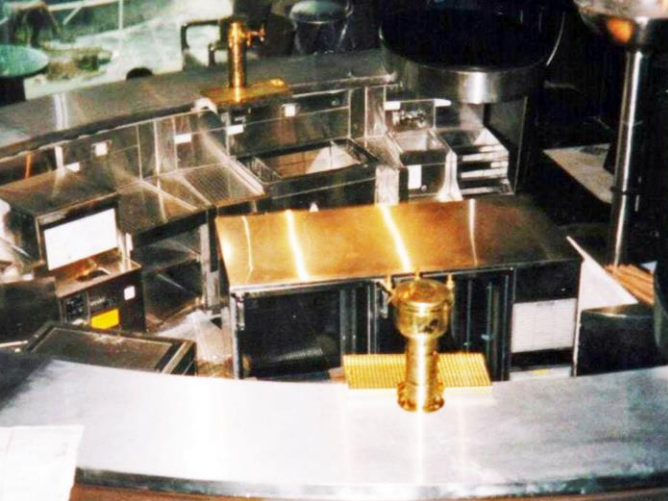
For further information on this design, please email at vm@benneta.com or call 011 41550060 ext 22.

Benneta Barscope Pvt Limited
1513-1514 Wazir Nagar, Block B
Pitamber Marg, New Delhi 110003 India



Galleries





Installations from Barzani Design Projects



Backbars ▲ Draft Beer ▲ Wine Cellars ▲ Brewery ▲ Automation ▲ Private Selections



SAMPLE LIST OF INSTALLATIONS

- 1911, THE IMPERIAL, DELHI (OUR FIRST INSTALLATION IN INDIA)
- GOLF BAR, ITC MAURYA, DELHI
- PANGAEA, ASHOK HOTEL DELHI
- ROCKMAN'S BEER ISLAND, GURGAON
- HOWZZAT BREWERY, GALAXY, GURGAON
- SCRUPLES, PLLAZIO, GURGAON
- BAR ZEN, MARRIOTT COURTYARD, GURGAON
- CHERRY BAR, THE LEELA SHAHADRA
- ORBIS, THE LEELA GURGAON
- DUBLIN, ITC MAURYA, DELHI
- HUMBLE HOUSE, ITC MAURYA, DELHI
- POINT OF VIEW, ITC MAURYA, DELHI
- AQUA, THE PARK, DELHI
- MIST, THE PARK, DELHI
- KITTY SU CLUB, THE LALIT, DELHI
- BLUE FROG BAR, MEHRAULI
- GEOFFREY'S, PARK PLAZA, FARIDABAD
- LUST, THE RADISSON, GHAZIABAD
- ORO, RADISSON, PASCHIM VIHAR DELHI
- ACSA, U.S. EMBASSY, DELHI
- TERRACE BAR, U.S. EMBASSY, DELHI
- LAP CLUB, SAMRAT HOTEL, DELHI
- OKO, THE LALIT, CHANDIGARH
- WILD FIRE RESTAURANT, CROWNE PLAZA, GURGAON
- CONNEXIONS LOBBY BAR, CROWNE PLAZA, GURGAON
- SHEESH MAHAL, ITC RAJPUTANA, JAIPUR
- POOL BAR, ITC RAJPUTANA, JAIPUR
- TAMAN GANG, DLF PROMENADE, DELHI
- ITALIA, DLF PROMENADE, DELHI
- TERRACE BAR, OPTUS SAROVAR, GURGAON
- KITTU SU CLUB, THE LALIT, CHANDIGARH
- OKO, THE LALIT, CHANDIGARH
- BALUCHI, THE LALIT, CHANDIGARH
- CAPITAL KITCHEN, TAJ PALACE, DELHI
- DLF CREST CLUB, GURGAON (DEALER)
- EMPEROR'S LOUNGE, TAJ MANSINGH, DELHI
- CHAMBER'S, TAJ MANSINGH, DELHI
- LOBBY BAR, THE CONNAUGHT, DELHI
- EARTH PLATE, SAHARA STAR MUMBAI
- DUSK, THE PARK NAVI MUMBAI
- HIGH LOUNGE, SAHARA STAR MUMBAI
- FLUTE, SAHARA STAR MUMBAI
- LAGOON LOUNGE, SAHARA STAR MUMBAI
- SIX DEGREE, THE LEELA KEMPINSKI MUMBAI
- TOTE ON THE TURF, MAHALAXMI MUMBAI
- INDIGO RESTAURANT, COLABA MUMBAI
- BOMBAY HIGH, ITC MARATHA MUMBAI
- PAN ASIAN, ITC MARATHA MUMBAI
- RESIDENT LOUNGE, ITC MARATHA MUMBAI
- PESHAWARI, ITC MARATHA MUMBAI
- IBIS HOTEL AIRPORT MUMBAI
- BLUE FROG BAR MUMBAI
- POINT OF VIEW, ITC GRAND CENTRAL MUMBAI
- DUBLIN, ITC GRAND CENTRAL MUMBAI
- AQUA, THE LEELA GOA
- TRIKAYA, VERSOVA MUMBAI
- CHILI'S MARKETCITY PUNE
- EASY LOUNGE BAR, TAJ BLUE DIAMOND PUNE
- BEST BREW PUB, SHERATON FOUR POINTS PUNE
- NIGHTCLUB, TIGERCAMP GOA
- AL FRESCO BAR, TIGERCAMP GOA
- MAIN BAR, TIGERCAMP GOA
- 6RIUMPH HOTEL, GOA (DEALER)
- QUALIA, LODHA, MUMBAI, EXPOSRL(2019)
- LOBBY BAR, TAJ GATEWAY RESIDENCYROAD
- MYNT, TAJ WEST END (2019)
- TRINITY, TAJ MG ROAD (2019)
- LIBRARY LOUNGE, THE LEELA PALACE BLR
- BLUE BAR, TAJ WEST END BLR
- ICE BAR, TAJ VIVANTA RESDENCY BLR
- SHIMMER, TAJ VIVANTA YESHWANTHPURBLR
- MED RESTAURANT, TAJ VIVANTA YESH.BLR
- PALM MEADOWS CLUB BLR
- TEASE, TAJ VIVANTA ITPL BLR
- AMNESIA, CHANCERY PAVILION BLR
- THE LOUNGE, CHANCERY PAVILION BLR
- HIGHLAND NECTAR, ITC GARDENIA BLR
- WEST VIEW, ITC GARDENIA BLR
- AQUA, THE PARK HOTEL BLR
- I-BAR, THE PARK HOTEL BLR
- MRS. GEORGE PENTHOUSE RESIDENCE
- MAYA RESTAURANT BLR
- FIREFLIES AT LAVELLE ROAD BLR
- DUBLIN, PARK SHERATON CHENNAI
- TWIST, TAJ VIVANTA TRIVANDRUM
- LEATHER BAR, PARK CHENNAI
- HIGH BAR, DREAM COCHIN
- AVA LOUNGE, DREAM COCHIN
- WELLINGTON, DREAM COCHIN
- TEASE, TAJ VIVANTA COIMBATORE
- ANCHOR, TAJ FISHERMAN COVE
- DEBUSSY BAR, CGH EARTH COCHIN
- POOL BAR, ITC GARDENIA BLR
- THE HUB, IBIS HOSUR ROAD BLR
- WINCHESTER BAR, RADISSON BLU CHENNAI
- 1CITY BAR, UB CITY BLR
- SANCTUM, CHANCERY PAVILION BLR
- CLUB EXCESS HICC NOVOTEL
- SYN, TAJ DECCAN
- WATERFRONT RESTAURANT, HS LAKE
- DUBLIN, ITC KAKATIYA
- KISMET CLUB, THE PARK HOTEL
- SIKKA LOUNGE, THE PARK HOTEL
- CAFÉ, THE PARK HOTEL
- CARBON, THE PARK HOTEL
- PRITHVI REDDY RESIDENCE
- THE BLUE FOX, MINERVA GRAND
- SUTRA, GRAND ASHOLK LALIT
- VUE, NOVOTEL VIZAG
- TERRACE BAR, NOVOTEL VIZAG
- GREAT KEBAB FACTORY, RADISSON INDORE
- LOBBY BAR, RADISSON INDORE
- TEASE, TAJ VIVANTA GOA

SAMPLE LIST OF INSTALLATIONS

- BODHI BAR, THE PARK KOLKATA
- WEST VIEW, ITC SONAR BANGLA
- PAN ASIAN, ITC SONAR BANGLA
- DUBLIN, ITC SONAR BANGLA
- BAY OF BENGAL, ITC SONAR BANGLA
- DARJEELING LOUNGE, ITC SONAR BANGLA
- AQUA, THE PARK HOTEL
- ROXY, THE PARK HOTEL
- CAFÉ BAR, THE PARK KOLKATA
- PRE FUNCTION BAR, PARK TPCL



INTERNATIONAL

- MIX BAR, TAJ SAMUDRA, COLOMBO, SRI LANKA
- TEASE BAR, TAJ SAMUDRA BENTOTA, SRILANKA
- PANGAEA ULTRALOUNGE, CITY OF DREAMS MANILA
- CHAOS NIGHTCLUB, CITY OF DREAMS MANILA
- HARD ROCK CAFÉ, LAGOS
- SHIRO, LAGOS
- SIX SENSES SPA, BHUTAN (DEALER)
- MARRIOTT KATHMANDU (DEALER)
- BREEZE BAR, LAGOS NIGERIA
- SHAKE SHACK, SINGAPORE
- THE OBEROI MAURITIUS
- UNKNOWN, MALDIVES (DEALER)





Singapore 2013



150+ confirmed advanced projects



India 2021



OUR COMPANY



Glastender®

CLENAWARE®

S Y S T E M S

ware excellence is standard



la Sommelière

EXPO

VITRIFRIGO
COOL AND BEYOND

ITV
ICE makers

DUNAVOX
THE WINE COOLING EXPERT

TEFCOLD®
COOL PRODUCTS WORLDWIDE

The Wine Square

winefit

Caveduke®
SINCE 1905
THE BRAND OF THE TOWER

Optimum

Billi™



OUR STRENGTH
IS IN COLLECTIVE INTELLIGENCE

Between the technology partners our customers find the most advanced options, features, and resources to meet cutting edge goals. Our partnership is to fuel our customer's vision in a way no one can.

Let barzoni propose the right fit.

From a traditional military family

Vickram Mederata Executive Director

PAN No.: AFPPM4020A
DIN: 01943418
Education: Mount St. Mary's
Skills: Finance, Design, CRM,
Import & Export, Branding &
Marketing .

RESPONSIBLE FOR
COMMERCIAL SPACE,
RELATED TO CUSTOMER
ACCOUNTS, SUPPLY
CHAIN,
COLLABORATIONS AND
STATUTORY OBLIGATIONS,
VICKRAM ALSO HEADS
THE PROJECT DESK
HELPING OUR CLIENTS TO
ACHIEVE THEIR GOALS AS
END-TO-END SOLUTION.
HE WORKS WITH
HILKNIGHTLY TEAMS TO
DELIVER OUR PROMISE.



Maj. ^{retd} RK Mehdiratta Director

PAN No.: AFNPM0900M
DIN: 10462313
Education: St. George's Military
School, Chail, Himachal, NDA
(National Defence Academy)
RETIRED FROM INDIAN ARMY, MAJOR
RAVI MEHDIRATTA, FROM CORPS OF
ENGINEERS, IS OUR QUINTESSENTIAL
ADVISOR IN TECHNICAL SPECIALIZATION
GIVING HILKNIGHTLY, A ROBUST
DEPENDABILITY OF SOLUTIONS WE OFFER.

Backstage

Kushalah Bucktowar Director

PAN No.: APSPB5351C
DIN: 02154299
Education: Queen Elizabeth College
Mauritius, Delhi College of Arts, India
Skills: Social Media, Marketing, Banking

KUSHALAH BUCKTOWAR MEDERATA,
WORKS WITH HILKNIGHTLY SINCE 2008
AND WORKS IN CORPORATE OFFICE
OVERSEEING BANKING, FINANCE AND
SOCIAL MEDIA.



HISTOGRAM



(L) 1990s, joining family business in electronics.

(R) Expanding into Hospitality industry in partnership with Glastender, with our first installations at The Imperial and ITC Hotels. Vickram with Todd M Hall in early 2002.



(L) Glastender factory visit for training in mid 2004 with Jon D. Hall (Chairman), and Todd Hall (VP), of family business.



(T) Visitation to Park Sheraton for Bar and Beer System installation.
(L) Collaboration with La Sommeliere, with Eric Paya (Director) 2008



(L) Vickram at installation of Glastender bar at Golfbar, ITC Maurya in early 2000s.
(R) Vickram with Chef Rahul Akerkar at Qualia where Expo Wine Wall was installed.
(Extreme Right) At installation of Lobby Bar, The Connaught in 2021 with team members.



OUR JOURNEY

FROM INDIAN ARMY TO INDIAN HOTELS

IT WAS 1988 WHEN MAJOR RK MEHDIRATTA, RETIRED FROM INDIAN ARMY FROM ENGINEERING CORE WHERE HE OVERSAW CONSTRUCTION PROJECTS. IN THE 90S HE LAUNCH THE ENTERPRISE FEMACK, TAKING ON PROJECTS FOR PUBLIC SECTOR INDUSTRIES, AND HOTELS, FOR WATER AUTOMATION AND FIRE FIGHTING SYSTEMS.

VICKRAM, JOINED THE ENTERPRISE IN MID 90s, AND WAS ENGAGED EXCLUSIVELY INTO HOSPITALITY SEGMENT CREATING AN ARM OF INTRODUCING CONTEMPORARY ENGINEERED PRODUCTS FROM EUROPE AND THE US.

A NEW ARM HOTELIARE TECHNOLOGIES, LAUNCHED MANY A BRANDS TO COME, AND WITHIN FEW YEARS WAS SUCCESSFUL IN SETTING

FROM DISTRIBUTOR TO CONSUMER RETAIL

UP ADVANCED INSTALLATIONS FOR HOTELS AS ITC WELCOMGROUP, THE IMPERIAL, TAJ HOTELS, THE PARK HOTELS, DEGUSTIBUS HOSPITALITY.

FROM 2000, TO 2020 THE BUSINESS UNDER BANNER OF BENNETA COMPLETED HUNDREDS OF PROJECTS AS WELL AS DISTRIBUTED TO CHAIN ACCOUNTS, FOODSERVICE SOLUTIONS.

2020s SAW HILKNIGHTLY INDIA PVT LTD FORAYING INTO THE LUXURY RESIDENTIAL SEGMENT RELEASING THE RESIDENTIAL SOLUTIONS READY FOR OUR MARKET. SINCE THEN, HILKNIGHTLY THROUGH STUDIO BARZZONI HAS BEEN WORKING WITH ARCHITECTS, DESIGNS AND CONSULTANTS TO PROVIDE TOP NOTCH INSTALLATIONS IN POSH APARTMENTS, FARM HOUSES AND BUNGALOWS ALONG WITH OUR HOSPITALITY SERVICES ARM.

REVIEWS

ONE OF THE BEST , BEVERAGE FACILITY PLANNER AND EXECUTION EXPERT QUALITY PRODUCTS , POST SALE SERVICE IS FIRST NOTCH GREAT ATTITUDE , KEEPS HIS PRODUCT LINE CONTEMPORARY AND ENERGY EFFICIENT. CERTAINLY, A GOOD CHOICE TO DO BUSINESS WITH.

GAUTAM ANAND

Exec. Vice President -2017
ITC Hotels Limited

*SO FAR THE BEST BAR EQUIPMENT IN ASIA!!!!!! SINCERELY
GIANCARLO MANCINO WWW.GIANCARLOBAR.COM*

GIANCARLO MANCINO

Consultant – Taj Hotels (Ice Bar)
Founder, Mancino Vermouth

I AM VERY IMPRESSED WITH HOW THINGS HAVE TURNED OUT AND RECOMMEND WORKING WITH VICKRAM ANY TIME. I MUST ADD GLASTENDER IS A GREAT PRODUCT, BUT WITHOUT VICKRAM, IT WILL NOT WORK AS WELL. AS A CLIENT I NEED THE RIGHT GUIDANCE.

BABA CHANDOK

Managing Director
Sanctum Bar, Chancery Pavilion Hotel

THIS IS THE SECOND UNIT THAT YOU HAVE INSTALLED IN TWO OF MY HOTELS. I AM EXTREMELY DELIGHTED BY THE PROFESSIONALISM SHOWN BY YOU AND YOUR TEAM RIGHT FROM THE START THEN WE FLOATED THE QUERY AND TILL THE TIME YOU INSTALLED THE MODULAR BAR SYSTEM WITH REMOTE DRAFT BEER AND SODA SYSTEM OF GLASTENDER. AS ALWAYS, YOUR AFTER SALES SERVICE IS VERY RESPONSIVE AND WE APPRECIATE THIS

MORE SO BECAUSE WE ARE BASED IN ANOTHER COUNTRY – SRI LANKA

MANOJ MATHEW

GM, Taj Hotels, Sri Lanka (Past)



PHENOMENAL PRODUCT AND THE ONLY HUMIDOR THAT TRULY WORKS WITH BOTH TEMPERATURE AND HUMIDITY CONTROLS! GREAT DESIGN, AMPLE STORAGE AND AMAZING CUSTOMER SERVICE! VIKRAM IS TRULY AMAZING AND HELPFUL!

UMANG BEDI

President
VerSe Innovations
(in private capacity)



STUDIO BARZZONI

STARTING AT MG ROAD, NEW DELHI, WE PRESENT A LINE OF EXPERIENCE CENTERS WHERE OUR CUSTOMERS CAN VISIT TO SEE AN ENTIRE RANGE.

WAREHOUSE TO DELIVER IN STOCK LIFESTYLE PRODUCTS AS WINE CABINETS, ICE MACHINES, WATER SYSTEMS, MINI BARS, AND RETAIL WINE & COCKTAIL TOOLS.

STUDIO WHICH ALIGNS WITH ARCHITECTS AND DESIGNERS TO HELP DESIGN FOCAL WINE WALLS, AND BARS FOR THEIR CLIENTS.

THEREAFTER LAUNCHING BARZZONI IN OTHER MARKETS. WE INVITE YOU TO JOIN IN THIS ENDEAVOR.



at 372-374 Level 1, MG Road,
Sultanpur, New Delhi 110030
RSVP zone@barzzoni.com
WA 9811448777



Come and visit us at VINO BARZZONI showroom. Experience options and discuss your needs.

We work with your architect to suggest the right product for your spaces with design.

Vino Barzzoni store is set to be one of its kind in India, where you build stand out solutions.



HILKNIGHTLY.COM / BARZZONI.COM
ZONE@BARZZONI.COM